

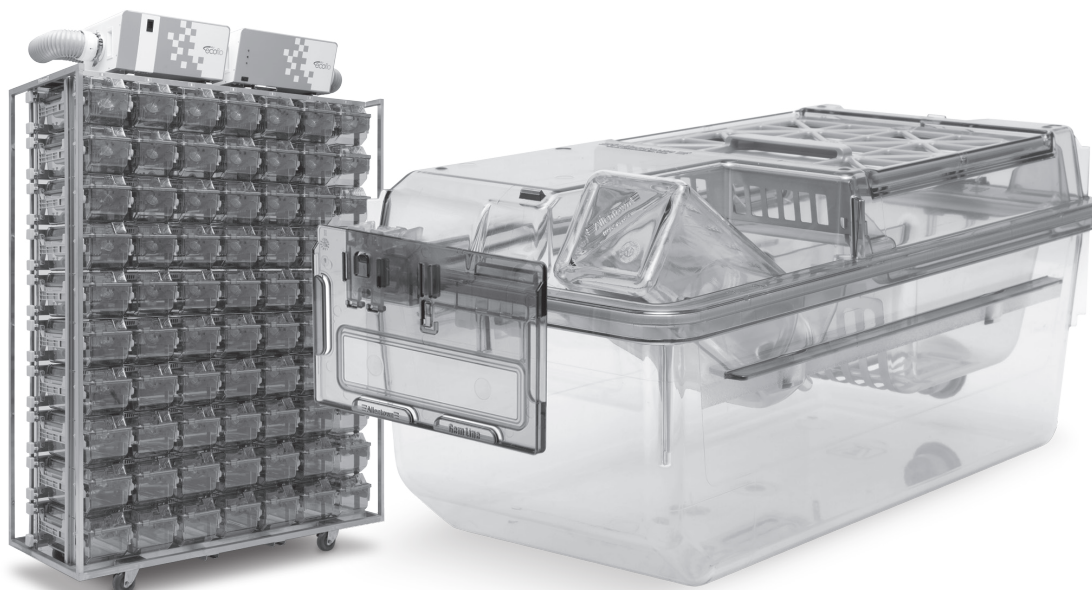


**Your trusted
global partner
in life-saving research**

For over 50 years, Allentown has provided critical solutions to the biomedical research community. Our high-quality equipment and advanced vivarium systems continue to define and exceed industry standards. Like everything we do, our unparalleled customer service is stamped with the Allentown hallmarks of integrity, dedication and care.

NexGen™

MOUSE 500



OVERVIEW

Providing critical solutions with integrity and care.



NexGen Mouse 500

Introducing the NexGen IVC system. Our goal in bringing the NexGen to market was to ensure it is the lightest, most cost-effective, easiest-to-use animal-friendly IVC system in the LAS industry.

Smooth sliding, easy gliding cage docking / undocking (Validated by third-party ergonomist)

Low vibration spares animals and staff from discomfort

Observation made easier and faster

“Super easy to take cage out of rack”

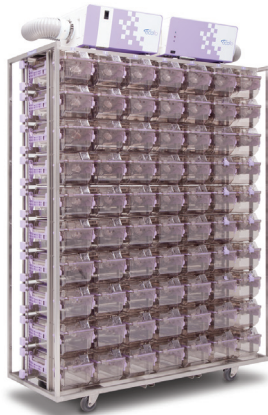
“It’s so quiet I can barely hear it”

“The functionality and maneuverability alone are excellent”

“All the animals bred well”

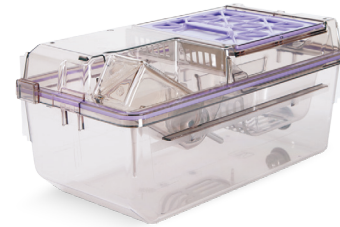
“Blower is simple to operate with no vibration issues”

COMPONENTS



IVC System

- Positive or negative precision air controlled rack
- Up to 180-cage capacity
- Lightweight, compact, and autoclave compatible rack design
- Plastic (polysulfone) cage support runners with integrated spring operated cage lock with docking indicator
- Ergonomic, single finger motion docking with auto-locking feature
- Horizontal airflow manifolds with tethered dual silicone end caps for ease of cleaning
- 5-inch and 3.5-inch diameter stainless steel casters with gray polypropylene wheels with sealed ball bearings and four foot-operated brakes
- Rear exhaust and supply plenum configurations for single-sided IVCs, or same side exhaust and supply plenum configurations for double-sided IVCs
- 4-inch diameter vertical supply and 4-inch diameter vertical exhaust plenums with back and bottom door access
- 304 stainless steel, welded frame construction, utilizing both square and rectangular structural tubing
- Cage air tubes are 304 stainless steel
- Automatic watering available
- Row and column identification labels
- Model number and serial number identification labels
- Compatible with all configurations of EcoFlo™ blowers
- Compatible with WiVarium Plus™ and Wi-Com Vantage™
- Compatible with Sentinel™ EAD® and Sentinel2™ Colony Health Monitoring systems
- Compatible with Wi-Com Sensus™ RFID census solution
- Accommodates both NexGen reusable and EasyCage® single-use cage systems



Cage System

- Cage floor space of 77.5 in² or 83 in² (with Edge cage)
- Clear polysulfone plastic
- Gasketed cage lid ensures safety and protection from damage
- Clear cage and flip-up / stay-up cardholders improve observations
- Easily-accessible water bottles (EBT)
- Hinged filter retainer swings up for easy filter replacements
- Compact nesting and stacking for more efficient autoclaving throughput
- Available with or without locks and with multiple feeder configurations
- Lightweight plastic feeder tray (PFT)

COMPONENTS

Standard Cage System with External Bottle Top
7.625 in x 7.110 in x 15.680 in
Floor space: 77.5 in²



Edge Cage System with Micro Barrier Top
7.625 in x 7.020 in x 15.638 in
Floor space: 83 in²

Bottle

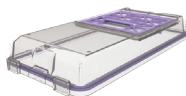


250 mL | .62 lbs (filled)
Item # PC250BCL+SLC

Top



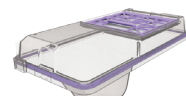
External Bottle Top
7.625 in x 4.474 in x 15.638 in | 1.30 lbs
Item # 228652-5 (without locks)
Item # 228652-4 (with locks)



Micro Barrier Top
7.625 in x 2.150 in x 15.680 in | 1.20 lbs
Item # 228655-5 (without locks)
Item # 228655-4 (with locks)



Dual External Bottle Top
7.625 in x 4.474 in x 15.680 in | 1.45 lbs
Item # 228843-1 (without locks)
Item # 228843-2 (with locks)



External Hydropac® Top*
7.625 in x 4.984 in x 15.638 in | 1.35 lbs
Item # 228682-1 (without locks)
Item # 228682-2 (with locks)

Cardholder



3 in x 5 in Vertical
Item # VH35P9-8
(also available in 3 in x 4 in
Item # VH34P9-8)



3 in x 5 in Horizontal
Item # HH35P9-8
(also available in 3 in x 4 in
Item # HH34P9-8)

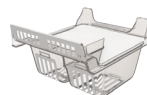
WBL / Feeder



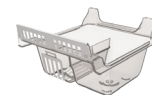
Wire Bar Lid
Food capacity: 426 g
7.000 in x 2.909 in x 14.750 in | 1.10 lbs
Item # 412483



Half Pocket Wire Bar Lid
Food capacity: 599 g
6.986 in x 4.459 in x 8.750 in | .80 lbs
Item # 314677

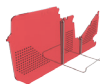


Dual PFT with Stainless Steel Grate
Food capacity: 848 g
7.026 in x 4.563 in x 8.664 in | .60 lbs
Item # 225663-1



Single PFT with Stainless Steel Grate (Hydropac®)
Food capacity: 426 g
7.026 in x 4.563 in x 8.664 in | .60 lbs
Item # 225664-1

Enrichment



Cage Divider
6.260 in x 6.614 in x 14.490 in | .25 lbs
Item # 224520-1



Enrichment Loft
2.361 in x 3.078 in x 4.008 in | .10 lbs
Item # 315680



Safe Harbor Mouse Retreat™
2.520 in x 2.756 in x 4.488 in | .11 lbs
Item # BIO-K3583



Mouse Mezzanine™
6.299 in x 2.756 in x 6.693 in | .19 lbs
Item # SZMEZZ

Cage



Standard Cage
7.625 in x 5.130 in x 15.010 in | 1.40 lbs
Item # 223581-4 (without automatic watering – shown above)
Item # 223581-2 (with automatic watering)



Edge Cage
7.625 in x 5.130 in x 15.010 in | 1.35 lbs
Item # 223580-4 (without automatic watering)
Item # 223580-2 (with automatic watering – shown above)

SPECIFICATIONS

Size	Depth (A)	Width (B)	Height ¹ (C)	Height ^{1,2} (D)	Matrix		Sides	Weights ³ (loaded)	Weights ³ (unloaded)	Animal Capacity	ACH	Supply Air	Exhaust Air (+)	Exhaust Air (-)	Energy Use	Heat Load
	in	in	in	in	Col.	Row		lbs	lbs			CFM	CFM	CFM	Watts	Watts
5-inch Casters																
60	24.5	51.688	80.076	81.202	6	10	1	500	298	300	50	14	11	18	10.8	9.7
70	24.5	59.750	80.076	81.202	7	10	1	550	315	350	50	16	12	20	11.1	10.0
80	24.5	67.812	80.076	81.202	8	10	1	655	388	400	50	18	14	23	11.5	10.4
120	35.0	55.857	80.076	81.202	6	10	2	785	408	600	50	27	20	34	11.7	10.5
140	35.0	63.919	80.076	81.202	7	10	2	890	425	700	50	32	24	40	13.0	11.7
160	35.0	71.981	80.076	81.202	8	10	2	990	492	800	50	36	27	45	13.6	12.3
3.5-inch Casters																
60	24.5	51.688	78.589	79.715	6	10	1	500	298	300	50	14	11	18	10.8	9.7
70	24.5	59.750	78.589	79.715	7	10	1	550	315	350	50	16	12	20	11.1	10.0
80	24.5	67.812	78.589	79.715	8	10	1	655	388	400	50	18	14	23	11.5	10.4
120	35.0	55.857	78.589	79.715	6	10	2	785	408	600	50	27	20	34	11.7	10.5
140	35.0	63.919	78.589	79.715	7	10	2	890	425	700	50	32	24	40	13.0	11.7
160	35.0	71.981	78.589	79.715	8	10	2	990	492	800	50	36	27	45	13.6	12.3

Note: a.) Airflow at sea-level b.) Rack weight without blowers, animals, bedding or watering c.) Airflow tolerance $\pm 10\%$ d.) Other configurations available.
¹ Height includes casters. Add 9.74 inches to 11.70 inches for rack mounted blowers ² Height includes removable runners and collars ³ All weights are approximations

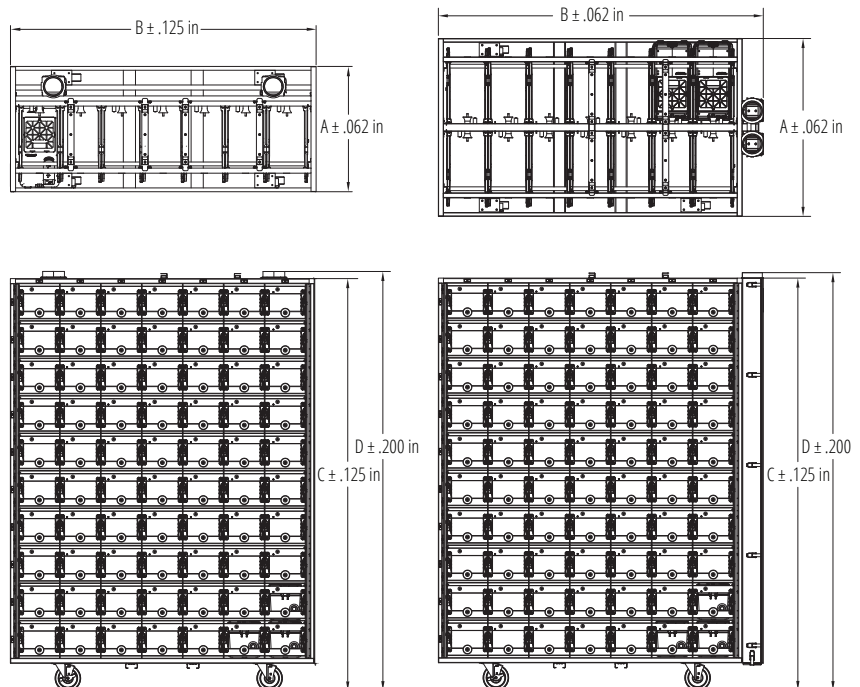
Notes

3.5-inch or 5-inch diameter casters

Optional top panel

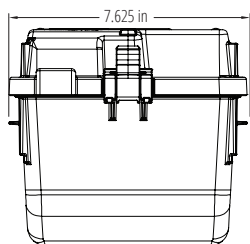
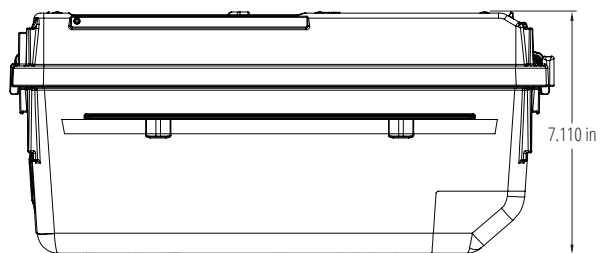
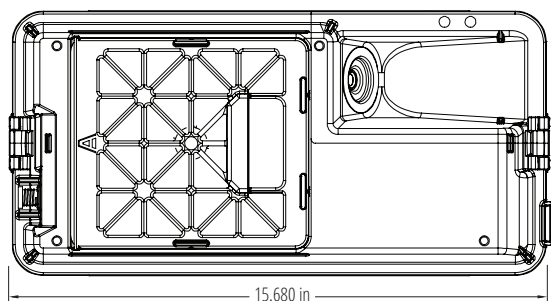
Optional bumpers may change dimensions

Multiple blower configurations



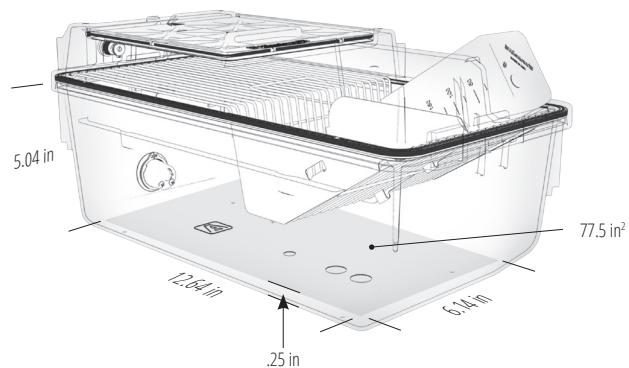
SPECIFICATIONS

External Dimensions

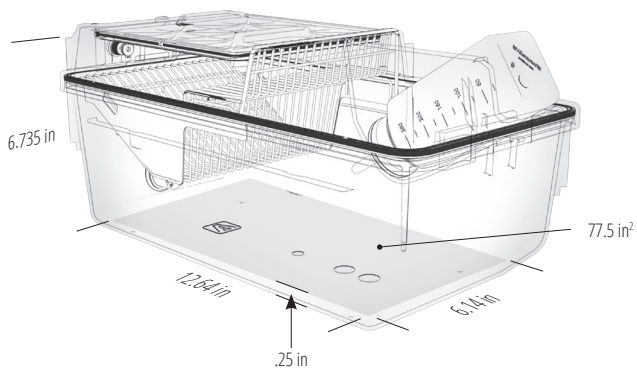


Internal Dimensions

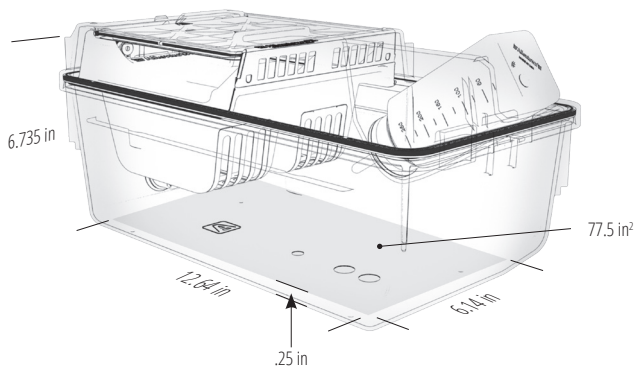
Full Pocket



Half Pocket

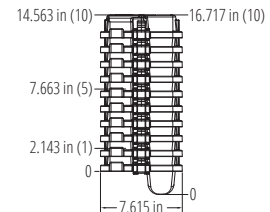
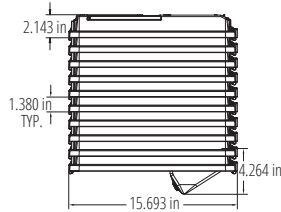
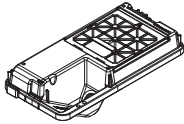


PFT

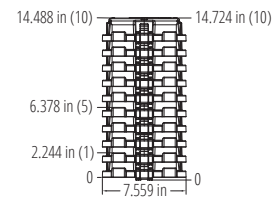
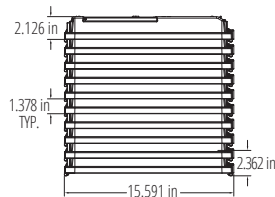
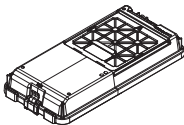


SPECIFICATIONS

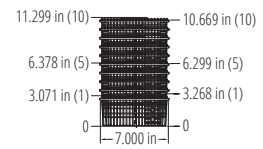
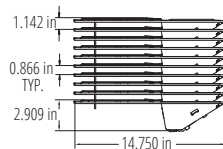
External Bottle Top



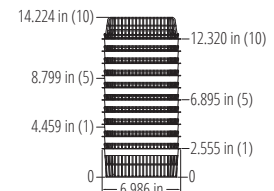
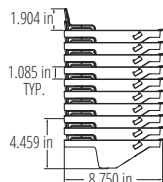
Micro Barrier Top



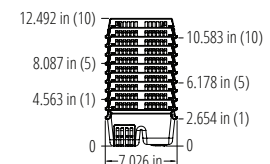
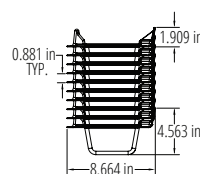
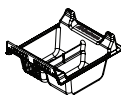
Full Pocket Wire Bar Lid



Half Pocket Wire Bar Lid



PFT



Cage

